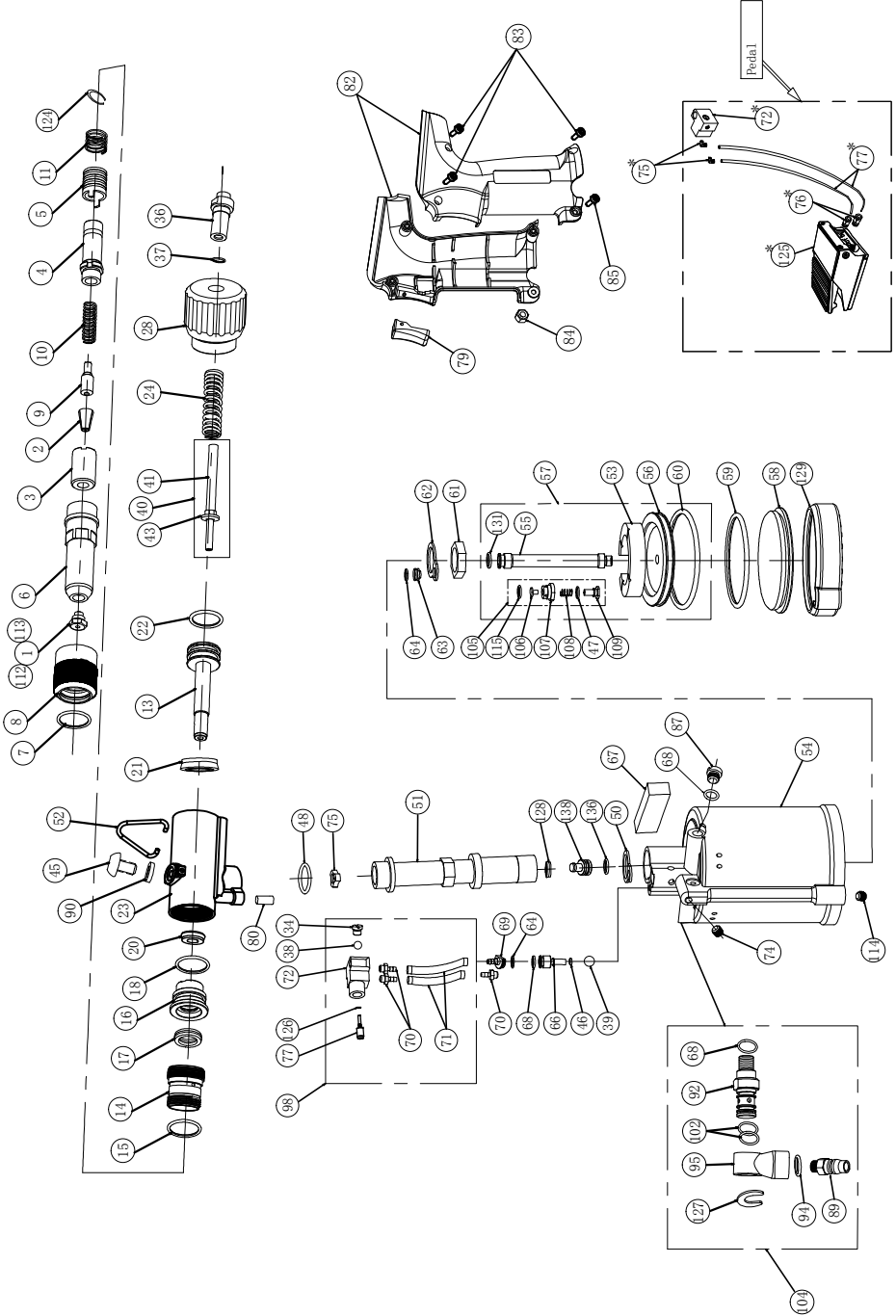


A320 Diagram



A320 Parts List

Item	Description	Part No	Item	Description	Part No	Item	Description	Part No	Item	Description	Part No	Item	Description	Part No
1	Nozzle	24M001A	22	O-Ring	B4M018B	55	Piston rod	R4M055B	80	Connecting pipe set	R4M080B	124	Retaining ring	G4M124A
112	Nozzle	24M001B	23	Oil cylinder	M4M023D	56	Piston plate	R4M056A	82	Handle	M4M082E	126	O-Ring	B4M126B
113	Nozzle	24M001C	24	Return spring	D4L024B	57	Air piston assembly	Z4M057B	83	Screw	G4M083A	127	Clamp spring	G4M127A
2	Jaws	R4M002A	28	End cap adapter	R4M028D	58	Cylinder bottom cover	R4M058A	84	Nut	G4M084A	128	Oil seal	B4M128A
3	Jaw Guide	R4M003A	34	Screw	R4M034B	59	O-Ring	B4M059A	85	Screw	G4M085A	129	Rubber base	M4M129A
4	Pulling head	R4M004A	36	Ejector guide	R4S036C	60	O-Ring	B4M060A	87	Screw	R4M087A	131	Support ring	B4M131A
5	Jaw guide lock	R4M005A	37	O-Ring	B4M037A	61	Sleeve lock nut	R4M061A	89	Joint tail	G48089B	136	O-Ring	B4H086A
6	Nose housing	R4M006A	38	Pawl (Rubber)	B4M141B	62	Washer	M4M062A	90	Washer	B48074A	138	Oil seal column	R4M138A
7	O-Ring	B4M007A	39	Pawl (Rubber)	312079A	63	Reversing the cover	R4M063B	92	Union joint	R4M092B	*Interchangeable parts		
8	Nose housing nut	R4M008A	40	Ejector assembly	Z4M040B	64	O-Ring	B4M064A	94	O-Ring	B4H121A			
9	Jaw pusher	R4M009A	41	Ejector rod A	R4M041C	66	Reversing piston	R4M066B	95	Joint set	M48066B	72*	Conversion block	R4M072D
10	Jaw pusher Spring	D4M010A	43	Ejector rod C	R4M043A	67	Silencing cotton	D4M067A	98	Switch assembly	Z4M079H	75*	Screw	G4M070B
11	Spring	D4M011A	45	Screw	G48045B	68	O-Ring	B4M068A	102	O-Ring	B4M102B	76*	Screw	G4M070C
13	Hydraulic piston	R4M013B	46	O-Ring	B4M046A	69	Reversing switch	R4M069B	104	Joint assembly	Z4M104C	77*	Answer the trachea(1.5mm)	D4M071C
14	Housing adapter	R4M014B	47	O-Ring	B4M047A	70	Screw	R4M070A	105	Frustrated assembly	Z4M105A	125*	Pedal	G4M118A
15	O-Ring	B4M015A	48	O-Ring	B48048A	71	Answer the trachea	D4M071A	106	Valve head	R4M106A			
16	Rod seal case	R4M016B	50	Gasket	M4M050A	72	Trigger	R4M072H	107	Valve bush	R4M107A			
17	Scraper	B4M017A	51	Oil rod	R4M051D	74	Stop screw	G4M074A	108	Elastic ring	D4M108A			
18	O-Ring	B4M018A	52	Hook	M48052B	75	Oil distributor	R6L058A	109	Valve rod	R4M109A			
20	Penta seal	B4M020B	53	Crash pad	M4M053B	77	Switch valve core	R4M077D	114	Stop screw	G4M114A			
21	Oil seal	B4M018C	54	Air cylinder	M4M054A	79	Trigger	M4M079C	115	O-Ring	B4M115A			