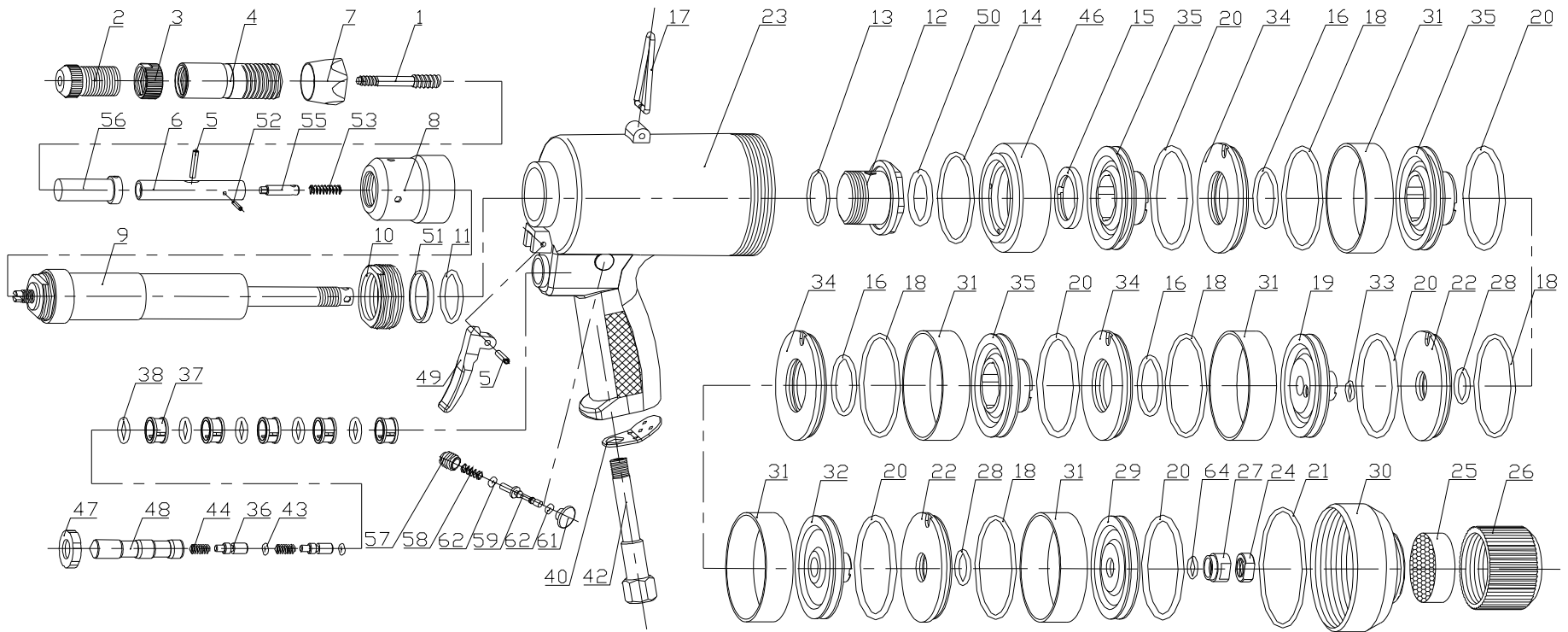


SN-6 PNEUMATIC NUT TOOL



APEX FASTENERS



LN#	PART NO.	DESCRIPTION
01	SN-6-01	Mandrel M4
		Mandrel M5
		Mandrel M6
02	SN-6-02	Nosepiece M4
		Nosepiece M5
		Nosepiece M6
03	SN-6-03	LUCK NUT
04	SN-6-04	STROKE REGULATION SLEEVE
05	SN-6-05	SPRING PIN
06	SN-6-06	CONNECTING SLEEVE
07	SN-6-07	HOUSING LOCK NUT
08	SN-6-08	NUT BASE
09	SN-6-09	AIR MOTOR ASSEMBLY
10	SN-6-10	DUAL NUT BASE
11	SN-6-11	O-RING
12	SN-6-12	HEAD SLEEVE
13	SN-6-13	O-RING
14	SN-6-14	O-RING
15	SN-6-15	WASHER
16	SN-6-16	O-RING
17	SN-6-17	HANGER
18	SN-6-18	O-RING
19	SN-6-19	THE FOURTH PISTON
20	SN-6-20	O-RING
21	SN-6-21	O-RING
22	SN-6-22	GROOVED PARTITION
23	SN-6-23	BODY
24	SN-6-24	PISTON ROD LOCK NUT
25	SN-6-25	MUFFLER
26	SN-6-26	MUFFLER COVER
27	SN-6-27	NUT

28	SN-6-28	O-RING
29	SN-6-29	THE SIXTH PISTON
30	SN-6-30	CYLINDER COVER
31	SN-6-31	FIVE CYLINDER SET
32	SN-6-32	THE FIFTH PISTON
33	SN-6-33	O-RING
34	SN-6-34	FRONT THREE PIECES PARTITION
35	SN-6-35	FRONT THREE PIECES PISTON
36	SN-6-36	REPLACEMENT PIVOT
37	SN-6-37	REVERSIBLE DEFLECTOR
38	SN-6-38	O-RING
40	SN-6-40	SILENCER
LN#	PART NO.	DESCRIPTION
42	SN-6-42	AIR INTAKE
43	SN-6-43	O-RING
44	SN-6-44	REVERSING SPRING
46	SN-6-46	THE FIRST CYLINDER
47	SN-6-47	SLIDE VALVE COVER
48	SN-6-48	REVERSING PISTON
49	SN-6-49	TRIGGER
50	SN-6-50	O-RING
51	SN-6-51	SUSTAINING RING
52	SN-6-52	SPRING PIN
53	SN-6-53	SPRING
55	SN-6-55	CONNECTING LINK
56	SN-6-56	SET COVER
57	SN-6-57	SCREW PLUG
58	SN-6-58	CONTROL VALVE SPRING
59	SN-6-59	CONTROL ROD
61	SN-6-61	REVERSE BUTTON
62	SN-6-62	O-RING
64	SN-6-64	O-RING